

Health & Wellbeing Board

4 June 2020

Response to Covid19 by Health and Wellbeing Board Partners

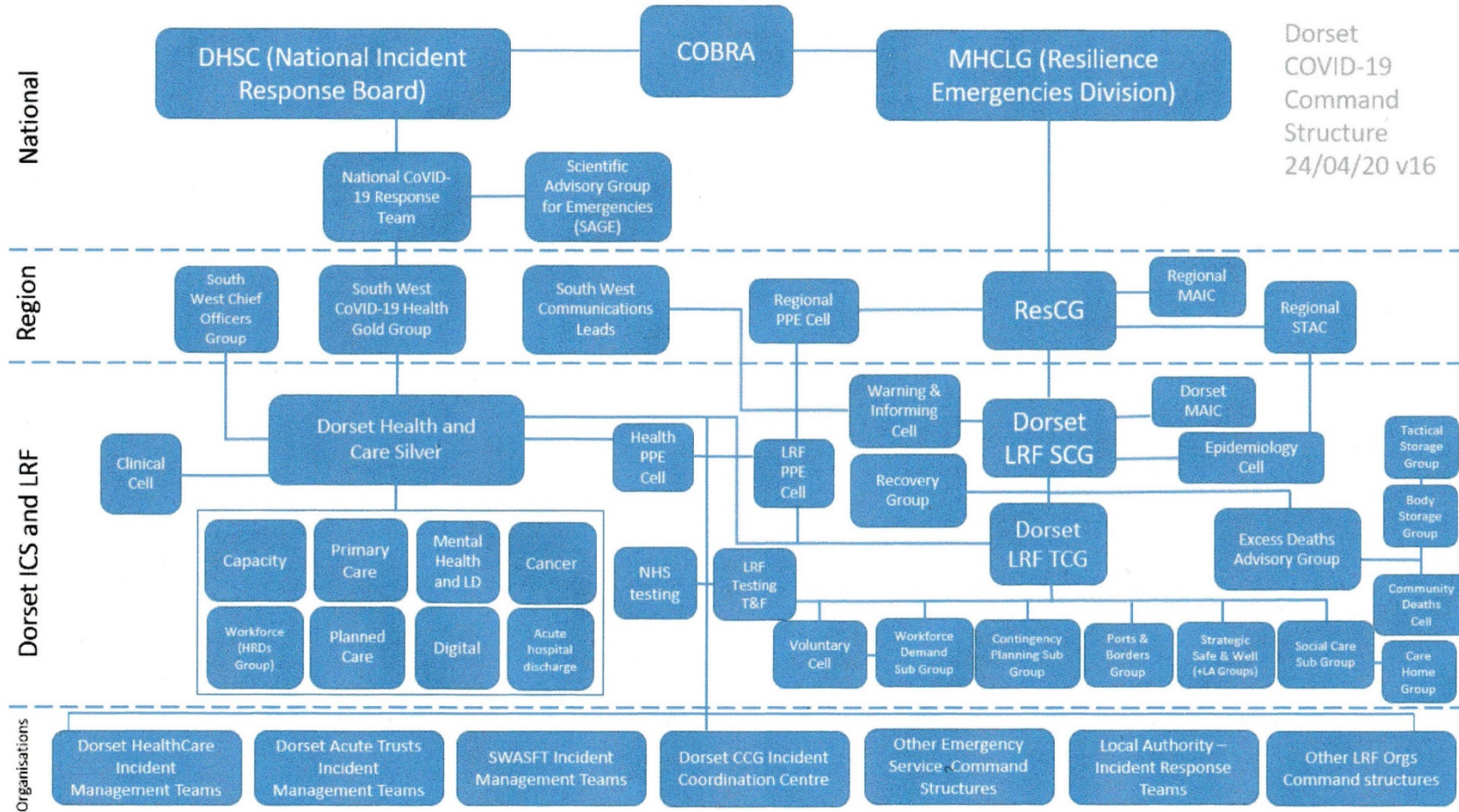


How has COVID-19 affected BCP to date?

- By 20th May, the pandemic had resulted in 465 confirmed cases in BCP Council
- These infections have resulted across the BCP and Dorset Council areas in 142 deaths among people admitted to hospital – and 120 deaths among people living in care homes as at 20th May
- The overall infection rate in the South West Region remains the lowest at 131 cases per 100,000 population
- Our local outbreak is characterised by ongoing transmission in clusters associated with high risk settings like hospitals and care homes – not widespread community transmission

DORSET COVID-19 COMMAND AND CONTROL STRUCTURE AND BATTLE RHYTHM

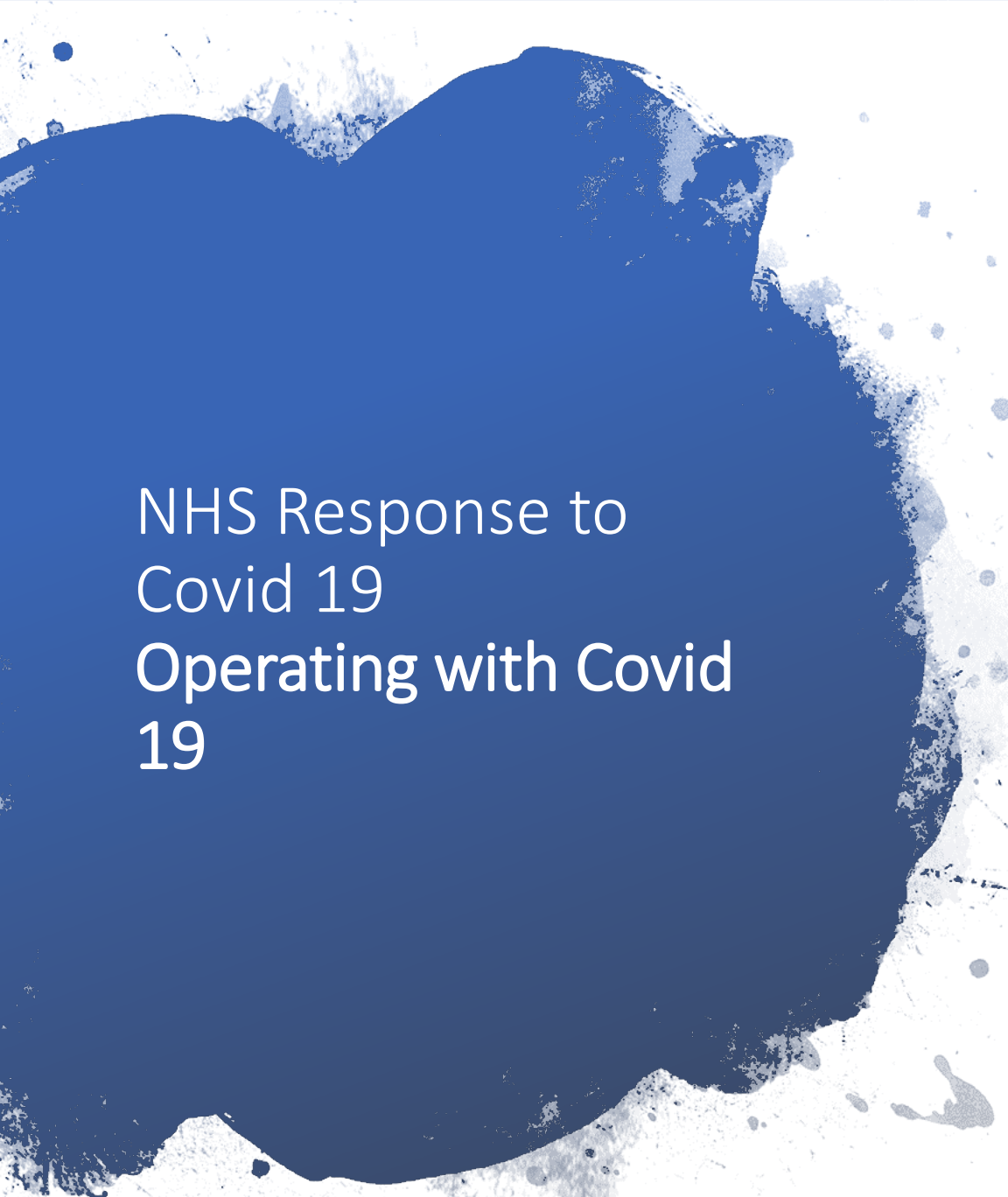
Command and Control Structure



NHS Response to Covid 19

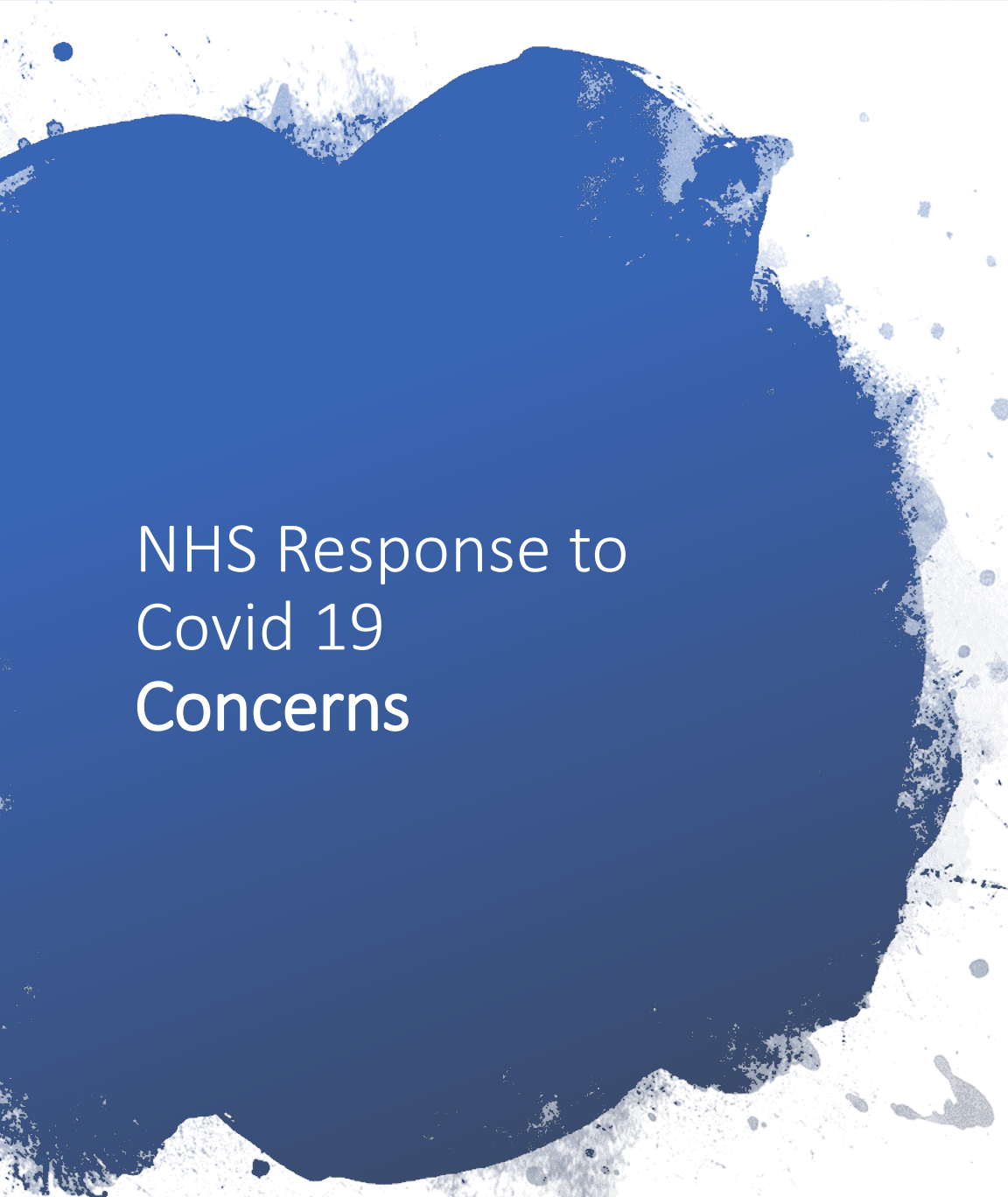
Preparing for Surge and Changes to Services

- Emptying hospital beds;
- Temporary building works;
- Increasing critical care capacity
- Nightingale hospital and commissioning of the independent sector
- Stopping elective work
- Stopping face to face outpatients
- Staff training
- Community led hospital discharge arrangements and ceasing of CHC assessments
- Total triage model in primary care and video consults
- Hot and cold sites
- Home visiting - primary and community services
- Additional support to care homes



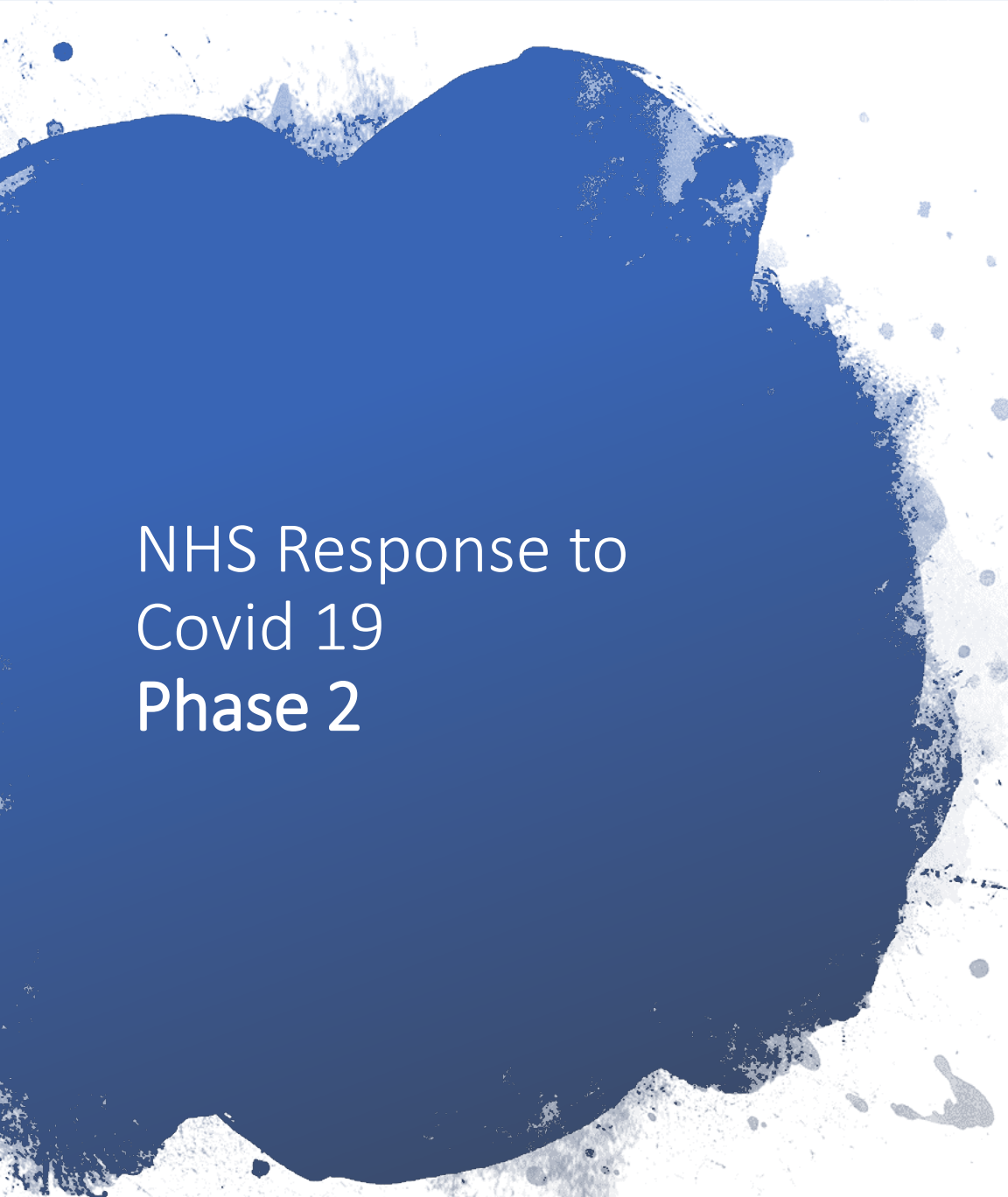
NHS Response to Covid 19 Operating with Covid 19

- Huge PPE requirements;
- Testing requirements;
- Segregation within sites;
- Staff having to self-isolate
- Use of technology – working from home



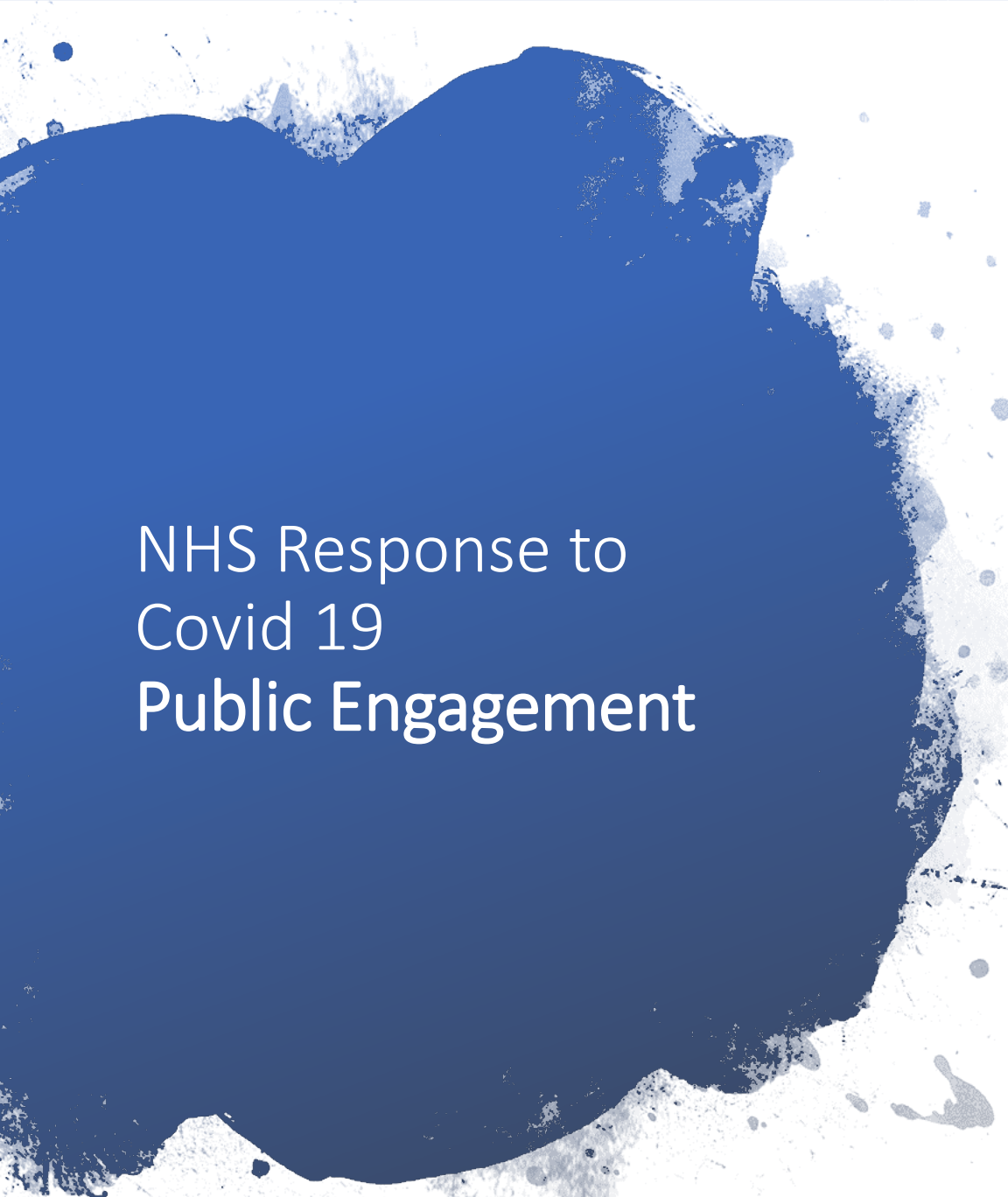
NHS Response to Covid 19 Concerns

- Reduction in referral to services, EG: Cancer, Children's, Cardiac
- Prescribing surge
- Mental health impact
- Latent demand – future surge in activity
- Peaks in COVID 19



NHS Response to Covid 19 Phase 2

- Now underway
- At least 12 month impact
- Balancing reintroduction of routine work and being prepared for surges and managing segregation
- Keep technology changes
- Keep PCN/NHS and Care partners working together



NHS Response to Covid 19 Public Engagement

- Warning and Informing group
- Key messages to the public about services being open
- Maintaining strong relationships with community groups and organisations
- Statutory duties to involve the public are informing the context of recovery planning.

Children's Services

- Brokerage (schools; early years)
 - Reasonable endeavours (EHCPs) and Local Offer
 - Workforce resilience (schools; services)
 - Redeploying to support safeguarding response
 - Intelligence, tracking & oversight, action (schools and LA)
 - Mobilising schools, settings & providers and use of SPOCs
 - Responding to non-attendance and building in support (enhanced arrangements; LWs)
 - Engagement, IAG with parents/ carers
 - Surveying and responding to children's mental health and well-being
 - Consultation lines; e-resources
- Next steps:
- EHCP arrangements
 - School attendance

Adult Social Care

Key areas of focus:

- Working with partners to implement changes to hospital discharge to enable hospitals to have capacity
- Social Care Act Easements – 3 Easements in place due to social distancing related to closure of day centres; hearing loss services and disability related adaptations
- Contacts for adult social care have remained at the same level prior to COVID19 but with greater emphasis on issues related to economic hardship
- Increase in adult social care safeguarding referrals from professionals and volunteers supporting those who are social distancing or who are shielded.
- Very active support of the adult social care provider sector with a particular focus on Care Homes. Nationally mandated Local Social Care Support Planning documents submitted on 29th May

Impact on Housing and Homelessness

- Significant increase in single homeless in temporary accommodation – rough sleepers and ‘hidden homeless’ (e.g. sofa surfers) – 300 in B and Bs
- 15-20 people rough sleeping
- Homeless families remain steady – very few if any in B and B
- Domestic abuse homelessness increase, links with Community Safety
- No early release offenders or hospital discharge homeless but plans in place
- Expecting significant homeless demand when lockdown further relaxed
- Risk & needs assessments / Close working with PHE and drugs and alcohol team
- Focus on keeping customers and staff safe – robust risk assessments
- Increased face to face contact - to assess and reassure

Impact on Housing and Homelessness

- Move-on strategy - 'Buffer' voids in Council & Housing Association stock, HomeChoice reset – homeless direct lets plus urgents, PRS moves
- Rough sleeper and temporary accommodation Covid multi-agency groups
- Homelessness Reduction Board fortnightly, Homelessness Partnership relaunch
- MHCLG Homelessness Team - regular contact
- 1,000s of welfare calls to Council Housing tenants, Housing Association tenants and those in housing need
- Housing Association meetings & guidance shared with other housing providers
- BCP Safeguarding and Vulnerable Persons Group focus

Impact on Crime and Disorder

- Weekly Partnership Co-ordinating Group and fortnightly Community Safety Partnership Board with a temporarily amended emphasis on Covid 19 in place
- Reduction in Crime seen at the start of lockdown is starting to level off
- Increase in Anti-social behaviour complaints - some around Covid restrictions, but not all – increasing neighbour disputes & reports of drug dealing
- Starting to see increased reporting of domestic abuse – some low level family disputes & adolescent to parent abuse, but no increase in high/medium risk cases
- MARAC meetings are continuing to function well
- Community Safety Partnership have adopted a Covid 19 Response Strategy which seeks to;
 - Provide safe and secure accommodation
 - Bring offenders to justice
 - Safeguard victims, children and vulnerable adults
 - Provide early intervention and support to prevent harm

Impact on Health & Wellbeing of the Population

Inequality and deprivation

COVID-19 deaths more likely in males than females – and fatality rate rises with age, especially 45+; death rate in deprived areas 2x least deprived, urban areas had highest death rates; deaths in BAME groups > expected; indirect impacts on inequality from economic impact as yet unknown but likely to be substantial – accommodation and food services most affected = lower paid workers

Mental health

Rise in anxiety associated with lockdown, and especially among financially affected – half of adults reported high anxiety in March 2020 compared with previous period (21%); economic insecurity and tenure status (private rental) key factors; locally picking up increased calls to helplines and services for support (Office for National Statistics)

Physical health

More people accessing LiveWell Dorset for smoking cessation support; fewer people exercising regularly + inequality dimension; more accessing support for drug dependency

More people believe UK will be more united and kinder after outbreak than before

Impact on Voluntary Sector

- The strength of BCP's voluntary sector has been demonstrated in response to Covid 19
- Many organisations and groups across the sector have adapted to meet the needs of the community as well as the need to change operating models to account for the situation
- We have seen a significant increase in volunteering and community groups working together in their local neighbourhoods
- In some areas activity has slowed down due to volunteer availability and capacity – this is a longer term concern
- Future viability concerns are a clear challenge to consider for the whole sector – particular risk area is Community Associations managing local community centres
- Maintaining and sustaining is the focus of the sector now as we move in to recovery
- The challenge now – how do we ensure we don't just rely on the sector in a time of crisis, but include in our new normal?

Recovery and Reset

All partners beginning to work as single agencies and in partnerships on a recovery and reset agenda with intention to learn from positive innovations made in response to COVID19

BCP Health and Well-Being Strategy to be considered for approval at Board meeting in July 2020

Annual theme for 202/21 was agreed to be promotion of physical activity for all local people – Board's views invited on how to progress in light of pandemic.